



GWR WIDE VOLTAGE CELLULAR ROUTER SERIES

GPRS/EDGE/HSPA+/DC-HSPA+/LTE

Wide Voltage GWR352 Router Series is designed to provide remote connectivity over 3G/4G LTE cellular networks especially for customers who require a power supply from 9 to 36 VDC. Geneko GWR352 Router Series brings scalability of even most demanding corporate networks to the highest possible level. Installing a reliable, high performance backup solution for existing land lines or satellite networks is now a simple task thanks to modern cellular networks. Therefore, no matter if the goal is to provide primary internet access or backup solution for already existing network GWR352 router series represents a top rated solution.

Many useful features make GWR352 routers a perfect solution for wide variety of applications:

- **Dual SIM card support** increases the reliability of the router and provides a solution for those applications where failure of one mobile network must not result in system downtime.
- **The whole set of advanced WAN settings** allows the user to specify desired parameters in order to meet the requirements of specific cellular network. GWR352 routers proved themselves to be reliable and high performance devices in many countries around the world.
- **VPN tunnel support** (GRE, IPsec and OpenVPN) provides powerful options for network expansion and secures data transfer over the cellular network.
- With **Serial-to-IP feature** it is possible to connect, control and perform data acquisition from almost any device with serial RS-232 port. In addition to this feature, GWR352 router series implements ModbusRTU-to-ModbusTCP functionality designed to support expansion of Modbus SCADA networks over the cellular networks.
- **Full control over device** - Easy to use web interface, extended CLI (Command Line Interface), detailed log, SMS control feature, and partial and full configuration Export/Import provide wide range of management functionalities. All those features and tools empower a user with full control over GWR352 routers.

Typical Application

Connectivity and Internet Access

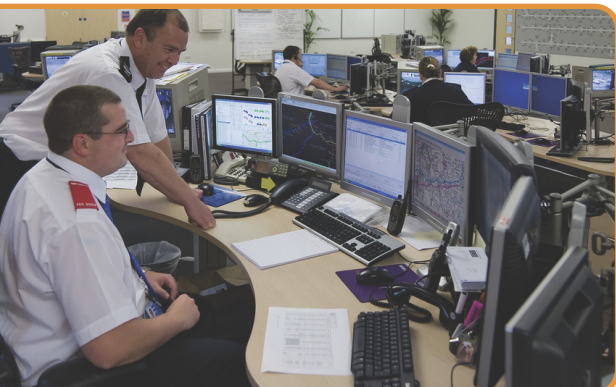
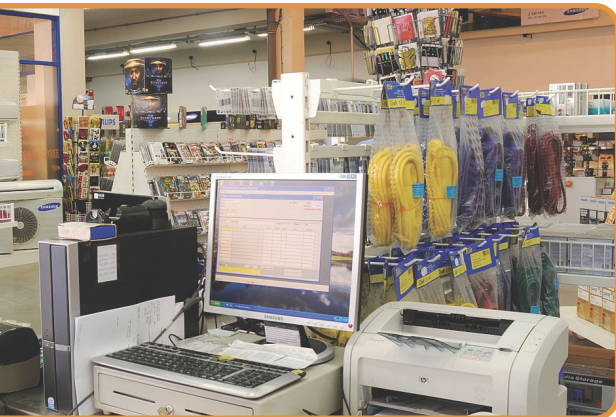
- Primary Internet access from remote areas
- Backup connectivity solution by cell networks
- Solutions for Remote Access to IT resources
- Internet access on the move

Financial services and retail

- Connection of ATMs and payment terminals
- Monitoring of vending & dispensing machines
- Connection of lottery and gaming machines
- Bank office supervision
- Information kiosks

Data collection & system supervision

- Extra-high voltage equipment monitoring
- Running water, oil/gas pipe line supervision
- Centralized heating system supervision
- Alert system supervision
- Power Grid and light supervision
- Solar PV and wind turbine Power Solutions



Technical specifications

RF characteristics

1) GWR352 – 4G LTE model

LTE

- LTE FDD: 800/850/900/1800/2100/2600 MHz
- LTE TDD: 2300/2500/2600 MHz

UMTS/HSPA+/DC-HSPA+

- 850/900/2100 MHz

GSM/GPRS/EDGE

- 900/1800 MHz

2) GWR352 – 3G HSPA+ model

UMTS/HSPA+

- 800/850/900/1900/2100 MHz

GSM/GPRS/EDGE

- 850/900/1800/1900 MHz

Interfaces and connectors

- 1 x embedded interface GPRS/EDGE/UMTS/HSPA+/DC-HSPA+/LTE
- Dual SIM card slots with protective cover (Push-Pull)
- GSM: 1 or 2 SMA female connectors (50 Ω) for external antennas (depending on the router model)
- 1 x Ethernet interface 10/100 Base-T, RJ-45 connector
- 1 x Serial RS-232 interface, Pinout 1: RTS, 2: DTR, 3: TX, 4: GND, 5: GND, 6: RX, 7: DSR, 8: CTS
- 1 x USB Host 1.1 interface, full speed 12 Mbps, connector type A

Status LED

- Ethernet activity/network traffic
- Power on
- GSM link activity
- GSM signal strength (5 LED's)
- Reset

Power requirements

- Input: 9-36 VDC / 1000 mA
- AC Power Supply: 100-240 VAC, 50/60 Hz, standard temperature range

Environmental

- Operating temperature: -40° C to +75° C
- Storage temperature: -40° C to +85° C
- Relative humidity: 5% to 95% (non-condensing)
- IP rating: IP30
- Ethernet isolation: 1.5 kV RMS
- Serial port protection (ESD): 15 kV

Physical

- Housing: Plastic coated 0.8 mm steel sheet, black; optional DIN rail mounting kit
- Dimensions (W x D x H): 95 x 135 x 35 mm
- Weight with 2 antennas: 430 gr

Accessories (included)

- GSM antenna, frequency: 698-960 / 1710-2700 MHz, 1 or 2 pcs depending on the router model
- AC/DC adapter
- Ethernet UTP cable
- RS-232 console cable

Protocols and features

Network

DHCP server, RIP, Port forwarding, DMZ support, SNMPv1,2c, DynDNS, NTP, Firewall (NAT, PAT, IP filtering), Serial-to-IP, ModbusRTU-to-ModbusTCP

VPN

GRE, GRE Keepalive, IPsec pass-through, IPsec main/aggressive, Data integrity (HMAC-MD5, SHA-1, Authentication and key management), IKE, manual keys, IKE features (Perfect Forward Secrecy, Auth-Method PSK, Identify IP address, DPD for constant connection, Automatic NAT-T behind NAT, Initiator and responder), IPsec tunnel failover, OpenVPN

Management

Web based configuration interface, Command Line Interface on serial console, SSH, SMS control, Detailed system log, Default reset, Firmware upload, Partial or full configuration Export/Import

QMS **ISMS** **CE** certified
ISO 9001:2015 ISO/IEC 27001:2013

Important note: Geneko reserves the right to make changes or improvements to any of the products without prior notice. Please contact the Sales Department regarding current product specifications.

Ordering information

Model	GPRS/ EDGE	UMTS/ HSPA+	UMTS/ DC-HSPA+	LTE	USB	RS-232	Eth port
GWR352 – 3G HSPA+	•	•	—	—	•	•	1
GWR352 – 4G LTE	•	•	•	•	•	•	1

CONTACT US

www.geneko.rs

Geneko Sales Team
e-mail: gwrsales@geneko.rs

Geneko Support Team
e-mail: gwrsupport@geneko.rs

Bul. Despota Stefana 59a
11000 Belgrade • Serbia

Phone: +381 11 3340-591, 3340-178
Fax: +381 11 3224-437